



GROOVED COUPLINGS AND FITTINGS

100TONG[®] IOOT[®]

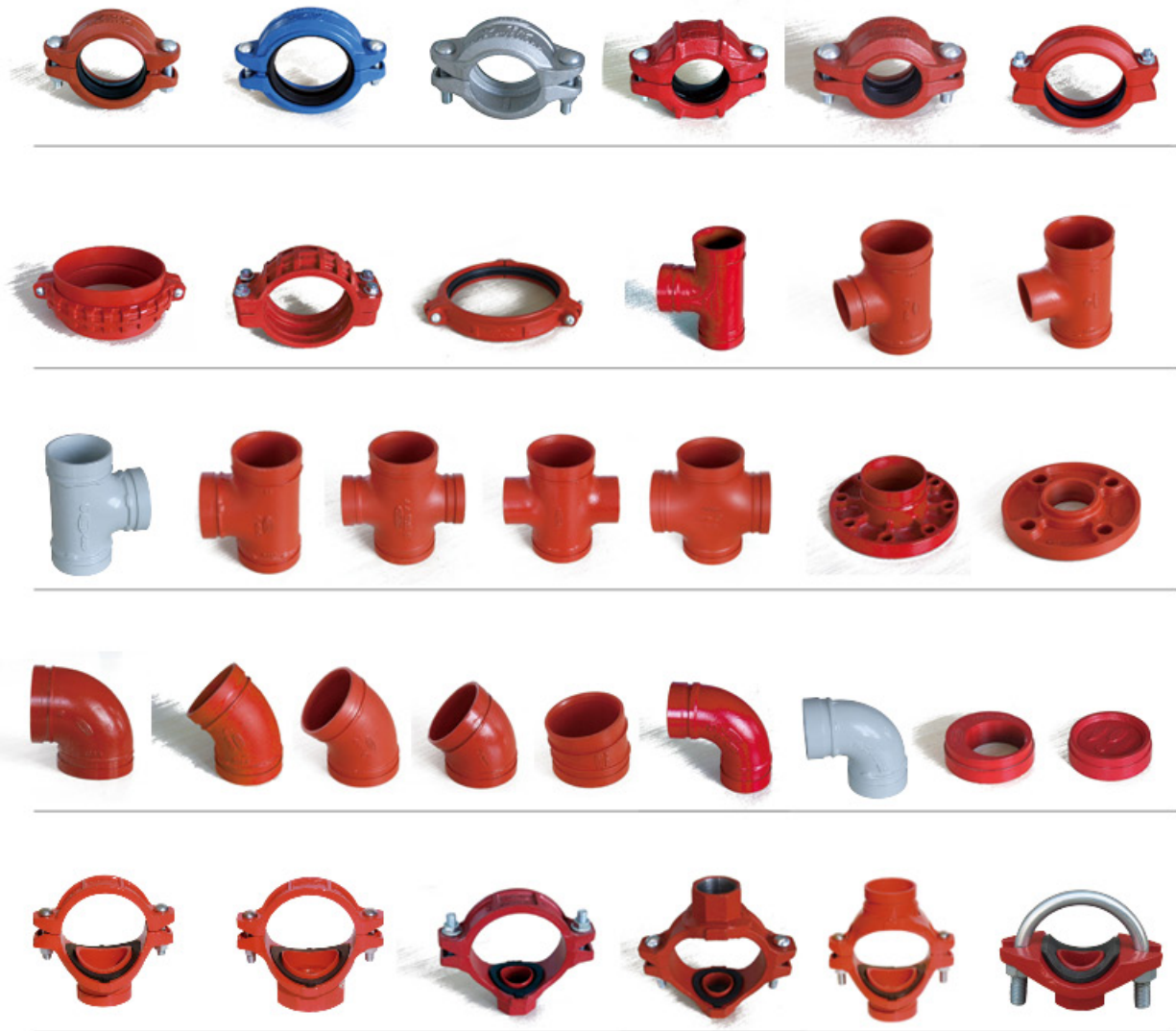
Weifang 100Tong Casting Co., Ltd.



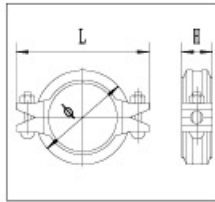
100Tong ductile iron casting conforming to ASTM A536 65-45-12 equal to QT450-12.

Coating: 1.painting 2.epoxy 3.dacromet 4.galvanized

Color: 1.Red 2.Blue 3.White 4.Orange

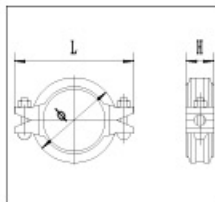


Rigid Coupling



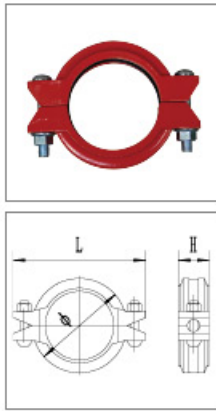
Nominal Size mm/in	Pipe O.D mm/in	Working Pressure PSI/MPa	Bolt Size No.-Size mm	Dimensions mm/in		
				Ø	L	H
25 1	33.7 1.327	500 3.45	2-M10x45	60 2.362	102 4.016	45 1.772
32 1¼	42.4 1.669	500 3.45	2-M10x45	70 2.756	106 4.173	44 1.732
40 1½	48.3 1.900	500 3.45	2-M10x45	73 2.874	108 4.252	44 1.732
50 2	57.0 2.245	500 3.45	2-M10x55	83 3.268	122 4.803	45 1.772
50 2	60.3 2.375	500 3.45	2-M10x55	87 3.425	123 4.843	44 1.732
65 2½	73.0 2.875	500 3.45	2-M10x55	100 3.937	138 5.433	44 1.732
65 2½	76.1 3.000	500 3.45	2-M10x55	103 4.055	142 5.591	45 1.772
80 3	88.9 3.500	500 3.45	2-M12x60	117 4.606	166 6.535	45 1.772
100 4	108.0 4.250	500 3.45	2-M12x65	137 5.393	188 7.401	48 1.889
100 4	114.3 4.500	500 3.45	2-M12x65	139 5.472	190 7.480	49 1.929
125 5	133.0 5.250	400 2.75	2-M12x75	163 6.417	210 8.268	49 1.929
125 5	139.7 5.500	400 2.75	2-M12x75	168 6.614	218 8.583	49 1.929
150 6	159.0 6.250	400 2.75	2-M12x75	192 7.559	242 9.528	49 1.929
150 6	165.1 6.500	400 2.75	2-M12x75	193 7.598	241 9.488	49 1.929
150 6	168.3 6.625	400 2.75	2-M12x75	198.5 7.815	249 9.803	50 1.969
200 8	219.1 8.625	300 2.07	2-M16x85	253 9.961	320 12.598	59 2.323
250 10	273 10.748	300 2.07	2-M22x130	335 13.189	426 16.772	68 2.677
300 12	323.9 12.752	300 2.07	2-M22x130	380 14.96	470 18.504	65 2.559

Flexible Coupling



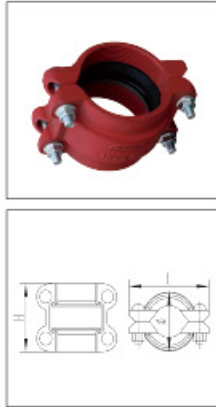
Nominal Size mm/in	Pipe O.D mm/in	Working Pressure PSI/MPa	Bolt Size No.-Size mm	Dimensions mm/in		
				Ø	L	H
25 1	33.7 1.327	500 3.45	2-M10x45	60 2.362	98 3.858	43.5 1.713
32 1¼	42.4 1.669	500 3.45	2-M10x45	67 2.638	106 4.173	44 1.732
40 1½	48.3 1.900	500 3.45	2-M10x45	73 2.874	108 4.252	44 1.732
50 2	57.0 2.245	500 3.45	2-M10x55	83 3.268	122 4.803	45 1.772
50 2	60.3 2.375	500 3.45	2-M10x55	87 3.425	123 4.843	44 1.732
65 2½	73.0 2.875	500 3.45	2-M10x55	100 3.937	138 5.433	44 1.732
65 2½	76.1 3.000	500 3.45	2-M10x55	103 4.055	142 5.591	45 1.772
80 3	88.9 3.500	500 3.45	2-M12x60	117 4.606	166 6.535	45 1.772
100 4	108.0 4.250	500 3.45	2-M12x65	137 5.393	188 7.401	48 1.889
100 4	114.3 4.500	500 3.45	2-M12x65	139 5.472	190 7.480	49 1.929
125 5	133.0 5.250	400 2.75	2-M12x75	163 6.417	210 8.268	49 1.929
125 5	139.7 5.500	400 2.75	2-M12x75	168 6.614	218 8.583	49 1.929
150 6	159.0 6.250	400 2.75	2-M12x75	192 7.48	239 9.409	49 1.929
150 6	165.1 6.500	400 2.75	2-M12x75	193 7.598	241 9.488	49 1.929
150 6	168.3 6.625	400 2.75	2-M12x75	198.5 7.815	249 9.803	50 1.969
200 8	219.1 8.625	300 2.07	2-M16x85	253 9.961	320 12.598	59 2.323
250 10	273 10.748	300 2.07	2-M22x130	317 12.48	401 15.787	63 2.48
300 12	323.9 12.752	300 2.07	2-M22x130	375 14.764	455 17.913	64 2.52
350 14	355.6 14	300 2.07	3-M22x130	418 16.457	508 20	74 2.913
350 14	377 14.843	300 2.07	3-M22x130	441 17.362	535 21.063	78 3.071
400 16	406.4 16	300 2.07	3-M22x130	467 18.386	567 22.323	78 3.071
400 16	425.5 16.752	300 2.07	2-M22x130	486 19.134	580 22.835	78 3.071

Shouldered Coupling



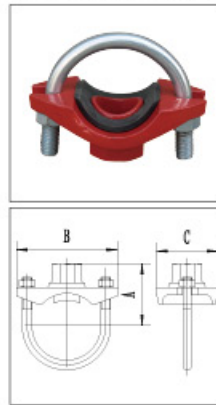
Nominal Size mm/in	Pipe O.D mm/in	Working Pressure PSI/MPa	Bolt Size No.-Size mm	Dimensions mm/in		
				Ø	L	H
50	60.3	300	2-M12x60	97	132	48
2	2.375	2.07		3.957	5.197	1.89
80	88.9	300		125	170	48
3	3.500	2.07	2-M12x75	4.921	6.692	1.89
100	114.3	300		157	205	52
4	4.500	2.07		6.181	8.070	2.047
150	165.1	300	2-M16x85	213	272	52
6	6.500	2.07		8.386	10.708	2.047
200	219.1	300		278	345	60
8	8.625	2.07	2-M20x100	10.945	13.583	2.362
250	273	300		340	415	64
10	10.748	2.07		13.38	16.339	2.52
300	323.9	300	2-M22x130	387	474	64
12	12.752	2.07		15.236	18.661	2.52
350	377	300		438	518	76
14	14.843	2.07	2-M22x130	17.244	20.394	2.992
400	425.5	300		506	605	76
16	16.752	2.07		19.921	23.819	2.992

HDPE Coupling



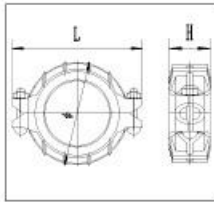
Nominal Size mm/in	Pipe O.D mm/in	Working Pressure PSI/MPa	Bolt Size No.-Size mm	Dimensions mm/in		
				Ø	L	H
50	60.3	300	4-M12x60	83	120	116
2	2.375	2.07		3.268	4.724	4.567
	63	300		89	116	105
	2.48	2.07	4-M10x55	3.504	4.567	4.134
	110	300		137	180	110
	4.33	2.07		5.394	7.087	4.331
	160	300	4-M12x75	188	235	118
	6.299	2.07		7.402	9.252	4.646
150	168.3	300		202	252	150
6	6.626	2.07	4-M16x85	7.953	9.921	5.906
200	219.1	300		258	320	152
8	8.626	2.07		10.157	12.598	5.984
	252	300	4-M16x100	288	350	141
	9.921	2.07		11.339	13.780	5.551
250	273	300		313	390	165
10	10.748	2.07	4-M20x100	12.323	15.354	6.496

U-Bolted Mechanical Tee Threaded



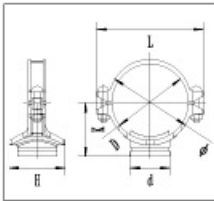
Nominal Size mm/in	Pipe O.D mm/in	Working Pressure PSI/MPa	U Bolt Size NO.-Size mm	Dimensions mm/in			Hole cutting dimensions mm/in
				A	B	C	
25x15	33.7x21.3	300	M10x25	49	76	43	24
1x1/2	1.327x0.839	2.07		1.929	2.992	1.654	0.945
25x20	33.7x26.9	300		58	84	43	24
1x3/4	1.327x1.059	2.07	M10x25	2.283	3.307	1.693	0.945
32x15	42.4x21.3	300		43	90	56	30
1 1/4x1/2	1.689x0.839	2.07		1.693	3.543	2.205	1.181
32x20	42.4x26.9	300	M10x28.5	45	90	56	30
1 1/2x3/4	1.689x1.059	2.07		1.772	3.543	2.205	1.181
32x25	42.4x33.7	300		50	90	56	30
1 1/2x1	1.689x1.327	2.07	M10x28.5	1.969	3.543	2.205	1.181
40x15	48.3x21.3	300		43	93	59	30
1 1/2x3/2	1.900x0.839	2.07		1.693	3.661	2.323	1.181
40x20	48.3x26.9	300	M10x28.5	54	93	59	30
1 1/2x3/4	1.900x1.059	2.07		2.126	3.661	2.323	1.181
40x25	48.3x33.7	300		58	93	59	30
1 1/2x1	1.900x1.327	2.07	M10x28.5	2.283	3.661	2.323	1.181
50x15	60.3x21.3	300		54	96	59	30
2x1/2	2.375x0.839	2.07		2.126	3.780	2.323	1.181
50x20	60.3x26.9	300	M10x30	56	96	59	30
2x3/4	2.375x1.059	2.07		2.205	3.780	2.323	1.181
50x25	60.3x33.7	300		66	96	59	30
2x1	2.375x1.327	2.07	M10x30	2.598	3.780	2.323	1.181
65x15	73.1x21.3	300		60	110	59	30
	2.878x0.839	2.07		2.362	4.331	2.323	1.181
65x20	73.1x26.9	300	M10x30	63	110	59	30
	2.878x1.059	2.07		2.480	4.331	2.323	1.181
	73.1x33.7	300		70	110	59	30
65x25	2.878x1.327	2.07	M10x30	2.756	4.331	2.323	1.181
65x15	76.1x21.3	300		61	110	59	30
	2.996x0.839	2.07		2.402	4.331	2.323	1.181
65x20	76.1x26.9	300	M10x30	67	110	59	30
	2.996x1.059	2.07		2.638	4.331	2.323	1.181
65x25	76.1x33.7	300		74	110	59	30
	2.847x1.327	2.07	2.913	4.331	2.323	1.181	

Reducing Flexible Coupling



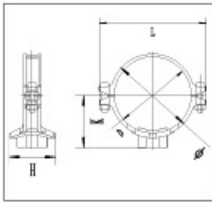
Nominal Size mm/in	Pipe O.D mm/in	Working Pressure PSI/MPa	Bolt Size No.-Size mm	Dimensions mm/in		
				Ø	L	H
50x32 2x1½	60.3x42.4 2.375x1.669	300 2.07	2-M10x55	90 3.543	129 5.079	47 1.850
50x40 2x1½	60.3x48.3 2.375x1.900	300 2.07	2-M10x55	90 3.543	129 5.079	47 1.850
65x40 2½x1½	73.0x48.3 2.874x1.900	300 2.07	2-M10x55	101 3.976	137 5.394	48 1.890
65x50 2½x2	73.0x60.3 2.874x2.375	300 2.07	2-M10x55	101 3.976	137 5.394	48 1.890
65x40 2½x1½	76.1x48.3 2.996x1.900	300 2.07	2-M10x55	105 4.134	140 5.512	48 1.890
65x50 2x2	76.1x60.3 2.996x2.375	300 2.07	2-M10x55	105 4.134	140 5.512	48 1.890
80x50 3x2	88.9x60.3 3.500x2.375	300 2.07	2-M12x65	120 4.724	164 6.457	48 1.890
80x65 3x2½	88.9x73.0 3.500x2.874	300 2.07	2-M12x65	120 4.724	164 6.457	48 1.890
80x65 3x2½	88.9x76.1 3.500x2.996	300 2.07	2-M12x65	120 4.724	164 6.457	48 1.890
100x40 4x1½	114.3x48.3 4.500x1.900	300 2.07	2-M12x65	150 5.906	195 7.677	49 1.929
100x50 4x2	114.3x60.3 4.500x2.375	300 2.07	2-M12x65	150 5.906	195 7.677	49 1.929
100x65 4x2½	114.3x76.1 4.500x2.996	300 2.07	2-M12x65	150 5.906	195 7.677	49 1.929
100x80 4x3	114.3x88.9 4.500x3.500	300 2.07	2-M12x65	150 5.906	195 7.677	49 1.929
125x50 5x2	139.7x60.3 5.500x2.375	300 2.07	2-M12x65	177 6.969	222 8.740	48.5 1.909
125x65 5x2½	139.7x76.1 5.500x2.996	300 2.07	2-M12x65	177 6.969	222 8.740	48.5 1.909
125x80 5x3	139.7x88.9 5.500x3.500	300 2.07	2-M12x65	177 6.969	222 8.740	48.5 1.909
125x100 5x4	139.7x114.3 5.500x4.500	300 2.07	2-M12x65	177 6.969	222 8.740	48.5 1.909
150x65 6x2½	165.1x76.1 6.500x2.996	300 2.07	2-M12x75	203 7.992	235 9.252	50 1.969
150x80 6x3	165.1x88.9 6.500x3.500	300 2.07	2-M12x75	203 7.992	235 9.252	50 1.969
150x100 6x4	165.1x114.3 6.500x4.500	300 2.07	2-M12x75	203 7.992	235 9.252	50 1.969
150x65 6x2½	168.3x76.1 6.625x2.996	300 2.07	2-M12x75	203 7.992	235 9.252	50 1.969
150x80 6x3	168.3x88.9 6.625x3.500	300 2.07	2-M12x75	203 7.992	235 9.252	50 1.969
150x100 6x4	168.3x114.3 6.625x4.500	300 2.07	2-M12x75	203 7.992	235 9.252	50 1.969
150x125 6x5	168.3x139.7 6.625x5.500	300 2.07	2-M12x75	203 7.992	235 9.252	50 1.969
200x65 8x2½	219.1x76.1 8.625x2.996	300 2.07	2-M16x100	264 10.394	313 12.323	60 2.362
200x80 8x3	219.1x88.9 8.625x3.500	300 2.07	2-M16x100	264 10.394	313 12.323	60 2.362
200x100 8x4	219.1x114.3 8.625x4.500	300 2.07	2-M16x100	264 10.394	313 12.323	60 2.362
200x125 8x5	219.1x139.7 8.625x5.500	300 2.07	2-M16x100	264 10.394	313 12.323	60 2.362
200x150 8x2½	219.1x165.1 8.625x6.500	300 2.07	2-M16x100	264 10.394	313 12.323	60 2.362
200x150 8x6	219.1x168.3 8.625x6.625	300 2.07	2-M16x100	264 10.394	313 12.323	60 2.362

Mechanical Tee Grooved



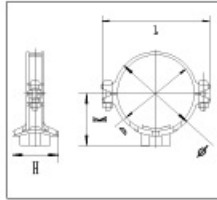
Nominal Size mm/in	Pipe O.D mm/in	Working Pressure PSI/MPa	Bolt Size	Dimensions mm/in				Hole cutting dimensions mm/in
				No.-Size mm	Ø	L	K	
50X32 2x1¼	80.3x42.4 2.375x1.669	300 2.07	2-M10x55	74	116	59	69	46
50X40 2x1½	80.3x48.3 2.375x1.900	300 2.07		2.913	4.566	2.322	2.716	1.811
65x25 2½x1	73x33.7 2.87x1.327	300 2.07		93	144	70	77	38
65x32 2½x1¼	73x42.4 2.87x1.669	300 2.07		3.661	5.669	2.755	2.716	1.496
65x40 2½x1½	73x48.3 2.87x1.900	300 2.07		93	144	70	84	46
65x25 2½x1	76.1x33.7 2.996x1.327	300 2.07		3.661	5.669	2.755	3.307	1.811
65x32 2½x1¼	76.1x42.4 2.996x1.669	300 2.07		93	144	70	84	46
65x40 2½x1½	76.1x48.3 2.996x1.900	300 2.07		3.661	5.669	2.755	3.307	1.811
80x25 3X1	88.9x33.7 3.500x1.327	300 2.07		104	152	76	78	38
80x32 3X1¼	88.9x42.4 3.500x1.669	300 2.07		4.094	5.984	2.755	3.070	1.496
80x40 3X1½	88.9x48.3 3.500x1.900	300 2.07	2-M12x65	104	152	77	91	51
80x50 3X2	88.9x60.3 3.500x2.375	300 2.07		4.094	5.984	2.755	3.582	2.007
100x25 4X1	114.3x33.7 4.500x1.327	300 2.07		114	152	82	97	61
100x32 4X1¼	114.3x42.4 4.500x1.669	300 2.07		4.488	5.984	3.228	2.402	2.402
100x40 4X1½	114.3x48.3 4.500x1.900	300 2.07		133	188	93	77	35
100x50 4X2	114.3x60.3 4.500x2.375	300 2.07		5.236	7.401	3.661	3.031	1.496
100x65 4x2½	114.3x76.1 4.500x2.996	300 2.07		133	188	93	83	46
100x80 4X3	114.3x88.9 4.500x3.500	300 2.07		5.236	7.322	3.661	3.267	1.811
125x50	139.7x60.3 5.500x2.375	300 2.07	2-M16x75	133	188	93	92	51
125x65	139.7x76.1 5.500x2.996	300 2.07		5.236	7.322	3.661	3.622	2.007
125x80	139.7x88.9 5.500x3.500	300 2.07		140	188	93	97	61
150x65	159.0x76.1 6.260x2.996	300 2.07		5.512	7.402	3.661	3.819	2.402
150x80	159.0x88.9 6.260x3.500	300 2.07		140	188	93	112	81
150x100	159.0x108.0 6.260x4.252	300 2.07		5.512	7.402	3.661	4.409	3.189
150x150	159.0x114.3 6.260x4.500	300 2.07	2-M16x85	140	188	93	122	86
150x50	165.1x60.3 6.500x2.375	300 2.07		5.512	7.402	3.661	4.803	3.386
150x65	165.1x76.1 6.500x2.996	300 2.07		168	220	107	112	81
150x80	165.1x88.9 6.500x3.500	300 2.07		6.614	8.661	4.213	3.819	2.402
150x100	165.1x114.3 6.500x4.500	300 2.07		168	220	107	122	86
150x32 6x1¼	168.3x42.4 6.625x1.669	300 2.07		6.614	8.661	4.213	4.803	3.386
150x40 6x1½	168.3x48.3 6.625x1.900	300 2.07		168	220	107	112	81
150x50 6X2	168.3x60.3 6.625x2.375	300 2.07		6.614	8.661	4.213	4.409	3.189
150x65 6x2½	168.3x76.1 6.625x2.996	300 2.07		187	242	117	122	86
150x80 6X3	168.3x88.9 6.625x3.500	300 2.07		7.362	9.528	4.606	4.803	3.386
150x100 6X4	168.3x114.3 6.625x4.500	300 2.07		187	242	117	134	114
200x50 8x2	219.1x60.3 8.625x2.375	300 2.07		7.362	9.528	4.606	5.276	4.488
200x65 8x2½	219.1x76.1 8.625x2.996	300 2.07	2-M16x85	187	242	117	134	114
200x80 8X3	219.1x88.9 8.625x3.500	300 2.07		7.362	9.528	4.606	5.276	4.488
200x100 8X4	219.1x108.0 8.625x4.250	300 2.07		194	247	125	97	61
200x150 8X6	219.1x165.1 8.625x6.500	300 2.07		7.638	9.724	4.921	3.819	2.402
250x100 10X4	273.0x114.3 10.748x4.500	300 2.07	2-M16x85	194	247	125	112	81
250x125 8X6	273.0x139.7 10.748x5.500	300 2.07		7.638	9.724	4.921	4.409	3.189
250x150 8X6	273.0x165.1 10.748x6.500	300 2.07	2-M16x100	194	247	125	134	114
250x200 10X8	273.0x219.1 10.748x8.625	300 2.07		7.638	9.724	4.921	5.276	4.488
250x250 12X10	273.0x273.0 10.748x10.748	300 2.07	2-M16x100	250	310	146	134	114
250x300 14X12	273.0x330.0 10.748x13.000	300 2.07		9.843	12.205	5.748	4.803	3.386
250x350 16X14	273.0x381.0 10.748x14.962	300 2.07	2-M16x100	250	310	146	134	114
250x400 18X16	273.0x432.0 10.748x16.924	300 2.07		9.843	12.205	5.748	5.276	4.488
250x450 20X18	273.0x483.0 10.748x18.886	300 2.07	2-M16x100	250	310	146	134	114
250x500 22X20	273.0x534.0 10.748x20.848	300 2.07		9.843	12.205	5.748	5.276	4.488
250x550 24X22	273.0x585.0 10.748x22.810	300 2.07	2-M22x130	309	376	174	214	160
250x600 26X24	273.0x636.0 10.748x24.772	300 2.07		12.165	14.803	6.850	8.425	6.299
250x650 28X26	273.0x687.0 10.748x26.734	300 2.07	2-M22x130	309	376	174	134	114
250x700 30X28	273.0x738.0 10.748x28.696	300 2.07		12.165	14.803	6.850	5.276	4.488
250x750 32X30	273.0x789.0 10.748x30.658	300 2.07	2-M22x130	309	376	174	188	135
250x800 34X32	273.0x840.0 10.748x32.620	300 2.07		12.165	14.803	6.850	7.323	5.315

Mechanical Tee Threaded



Nominal Size mm/in	Pipe O.D mm/in	Working Pressure PSI/MPa	Bolt Size No.-Size mm	Dimensions mm/in				Hole cutting dimensions mm/in
				Ø	L	K	H	
40X25 1½x1	48.3x33.7 1.900x1.327	300 2.07	2-M10X45	67	112	56	61	32
				2.637	4.409	2.204	2.401	1.259
50X25 2x1	60.3x33.7 2.375x1.327	300 2.07	2-M10X45	75	116	60	69	38
				2.953	4.567	2.362	2.717	1.496
50X32 2x1¼	60.3x42.4 2.375x1.669	300 2.07	2-M10X55	75	116	60	69	46
				2.953	4.567	2.362	2.717	1.811
50X40 2x1½	60.3x48.3 2.375x1.900	300 2.07	2-M10X55	75	116	60	69	46
				2.953	4.567	2.362	2.717	1.811
65X32 2½x1¼	73x42.4 2.87x1.669	300 2.07		93	144	70	84	46
				3.661	5.669	2.755	3.307	1.811
65X40 2½x1½	73x48.3 2.87x1.900	300 2.07		93	144	70	83	51
				3.661	5.669	2.755	3.267	2.007
65X25 2½x1	76.1x33.7 2.996x1.327	300 2.07		102	144	70	77	38
				4.016	5.669	2.756	3.031	1.496
65X32 2½x1¼	76.1x42.4 2.996x1.669	300 2.07		102	144	70	83	46
				4.016	5.669	2.756	3.268	1.811
65X40 2½x1½	76.1x48.3 2.996x1.900	300 2.07		102	144	70	83	51
				4.016	5.669	2.756	3.268	2.008
80X25 3x1	88.9x33.7 3.500x1.327	300 2.07		114	152	82	77	38
				4.488	5.984	3.228	3.031	1.496
80X32 3x1¼	88.9x42.4 3.500x1.669	300 2.07		114	152	82	83	46
				4.488	5.984	3.228	3.268	1.811
80X40 3x1½	88.9x48.3 3.500x1.900	300 2.07		114	152	82	92	51
				4.488	5.984	3.228	3.622	2.008
80X50 3x2	88.9x60.3 3.500x2.375	300 2.07		114	152	82	99	61
				4.488	5.984	3.228	3.898	2.402
100X25 4x1	108.0x33.7 4.252x1.327	300 2.07		135	172	87	77	38
				5.315	6.772	3.425	3.031	1.496
100X32 4x1¼	108.0x42.4 4.252x1.669	300 2.07	2-M12X65	135	172	87	83	46
				5.315	6.772	3.425	3.268	1.811
100X40 4x1½	108.0x48.3 4.252x1.900	300 2.07	2-M12X65	135	172	87	92	51
				5.315	6.772	3.425	3.622	2.008
100X50 4x2	108.0x60.3 4.252x2.375	300 2.07	2-M12X65	135	172	87	97	61
				5.315	6.772	3.425	3.819	2.402
100X65 4x2½	108.0x76.1 4.252x2.996	300 2.07	2-M12X65	135	172	87	112	70
				5.315	6.772	3.425	4.409	2.756
100X25 4x1	114.3x33.7 4.500x1.327	300 2.07		140	188	93	77	38
				5.512	7.402	3.661	3.031	1.496
100X32 4x1¼	114.3x42.4 4.500x1.669	300 2.07		140	188	93	83	46
				5.512	7.402	3.661	3.268	1.811
100X40 4x1½	114.3x48.3 4.500x1.900	300 2.07		140	188	93	92	51
				5.512	7.402	3.661	3.622	2.008
100X50 4x2	114.3x60.3 4.500x2.375	300 2.07		140	188	93	97	61
				5.512	7.402	3.661	3.819	2.402
100X65 4x2½	114.3x76.1 4.500x2.996	300 2.07		140	188	93	112	81
				5.512	7.402	3.661	4.409	3.189
100X80 4x3	114.3x88.9 4.500x3.500	300 2.07		140	188	93	122	86
				5.512	7.402	3.661	4.803	3.386
125X25	133.0x33.7 5.236x1.327	300 2.07		160	210	100	77	38
				6.299	8.268	3.937	3.031	1.496
125X32	133.0x42.4 5.236x1.669	300 2.07		160	210	100	83	46
				6.299	8.268	3.937	3.268	1.811
125X40	133.0x48.3 5.236x1.900	300 2.07		160	210	100	92	51
				6.299	8.268	3.937	3.622	2.008
125X50	133.0x60.3 5.236x2.375	300 2.07		160	210	100	97	61
				6.299	8.268	3.937	3.819	2.402
125X65	133.0x76.1 5.236x2.996	300 2.07	2-M16X75	160	210	100	112	81
				6.299	8.268	3.937	4.409	3.189
125X80	133.0x88.9 5.236x3.500	300 2.07	2-M16X75	160	210	100	122	86
				6.299	8.268	3.937	4.803	3.386
125X25	139.7x33.7 5.500x1.327	300 2.07		168	220	107	77	38
				6.614	8.661	4.213	3.031	1.496
125X32	139.7x42.4 5.500x1.669	300 2.07		168	220	107	83	46
				6.614	8.661	4.213	3.268	1.811
125X40	139.7x48.3 5.500x1.900	300 2.07		168	220	107	92	51
				6.614	8.661	4.213	3.622	2.008
125X50	139.7x60.3 5.500x2.375	300 2.07		168	220	107	97	61
				6.614	8.661	4.213	3.819	2.402

Mechanical Tee Threaded



Nominal Size mm/in	Pipe O.D mm/in	Working Pressure PSI/MPa	Bolt Size No.-Size mm	Dimensions mm/in				Hole cutting dimensions mm/in
				Ø	L	K	H	
125x65	139.7x76.1	300	2-M16X75	168	220	107	112	81
	5.500x2.996	2.07		6.614	8.661	4.213	4.409	3.189
125x80	139.7x88.9	300	2-M16X75	168	220	107	122	86
	5.500x3.500	2.07		6.614	8.661	4.213	4.803	3.386
150x25	159.0x33.7	300		187	242	117	77	38
	6.260x1.327	2.07		7.362	9.528	4.606	3.031	1.496
150x32	159.0x42.4	300		187	242	117	83	46
	6.260x1.669	2.07		7.362	9.528	4.606	3.268	1.811
150x40	159.0x48.3	300		187	242	117	92	51
	6.260x1.900	2.07		7.362	9.528	4.606	3.622	2.008
150x50	159.0x60.3	300		187	242	117	97	61
	6.260x2.375	2.07		7.362	9.528	4.606	3.819	2.402
150x65	159.0x76.1	300		187	242	117	112	81
	6.260x2.996	2.07		7.362	9.528	4.606	4.409	3.189
150x80	159.0x88.9	300		187	242	117	122	86
	6.260x3.500	2.07		7.362	9.528	4.606	4.803	3.386
150x25	165.1x33.7	300		194	247	125	77	38
	6.500x1.327	2.07		7.638	9.724	4.921	3.031	1.496
150x32	165.1x42.4	300		194	247	125	83	46
	6.500x1.669	2.07		7.638	9.724	4.921	3.268	1.811
150x40	165.1x48.3	300		194	247	125	92	51
	6.500x1.900	2.07		7.638	9.724	4.921	3.622	2.008
150x50	165.1x60.3	300	2-M16x85	194	247	125	97	61
	6.500x2.375	2.07		7.638	9.724	4.921	3.819	2.402
150x65	165.1x76.1	300		194	247	125	112	81
	6.500x2.996	2.07		7.638	9.724	4.921	4.409	3.189
150x80	165.1x88.9	300		194	247	125	122	86
	6.500x3.500	2.07		7.638	9.724	4.921	4.803	3.386
150x100	165.1x114.3	300		194	247	125	134	114
	6.500x4.500	2.07		7.638	9.724	4.921	5.276	4.488
150x25	168.3x33.7	300		198	247	120	77	38
	6x1	6.625x1.327		2.07	7.795	9.724		3.031
150x32	168.3x42.4	300		198	247	120	82	46
	6x1¼	6.625x1.669		2.07	7.795	9.724	4.724	3.228
150x40	168.3x48.3	300		198	247	120	92	51
	6x1½	6.625x1.900		2.07	7.795	9.724	4.724	3.622
150x50	168.3x60.3	300		198	247	120	98	61
	6x2	6.625x2.375		2.07	7.795	9.724	4.724	3.858
150x65	168.3x76.1	300		198	247	120	121	82
	6.625x2.996	2.07		7.795	9.724	4.724	4.763	3.228
150x80	168.3x88.9	300		198	247	120	134	86
	6x3	6.625x3.500		2.07	7.795	9.724	4.724	5.275
200x25	219.1x33.7	300		250	310	146	77	46
	8x1	8.625x1.327		2.07	9.843	12.205	5.748	3.031
200x32	219.1x42.4	300		250	310	146	83	46
	8x1¼	8.625x1.669		2.07	9.843	12.205	5.748	3.268
200x40	219.1x48.3	300		250	310	146	92	51
	8x1½	8.625x1.900		2.07	9.843	12.205	5.748	3.622
200x50	219.1x60.3	300	2-M16x100	250	310	146	97	61
	8x2	8.625x2.375		2.07	9.843	12.205	5.748	3.819
200x65	219.1x76.1	300		250	310	146	112	81
	8.625x2.996	2.07		9.843	12.205	5.748	4.409	3.189
200x80	219.1x88.9	300		250	310	146	122	86
	8.625x3.500	2.07		9.843	12.205	5.748	4.803	3.386
200x100	219.1x114.3	300		250	310	146	134	114
	8x4	8.625x4.500		2.07	9.843	12.205	5.748	5.276
250x40	273.0x48.3	300		309	376	174	92	51
	10x1½	10.748x1.900		2.07	9.843	12.205	5.748	3.622
250x50	273.0x60.3	300		309	376	174	97	61
	10x2	10.748x2.375		2.07	9.843	12.205	5.748	3.819
250x65	273.0x76.1	300	2-M22x130	309	376	174	112	81
	10.748x2.996	2.07		9.843	12.205	5.748	4.409	3.189
250x80	273.0x88.9	300		309	376	174	122	86
	10x3	10.748x3.500		2.07	9.843	12.205	5.748	4.803
250x100	273.0x114.3	300		309	376	174	134	114
	10x4	10.748x4.500		2.07	9.843	12.205	5.748	5.276
250x125	273.0x139.7	300		309	376	174	186	135
	10.748x5.500	2.07		12.165	14.803	6.850	7.323	5.315

90° Elbow



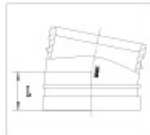
45° Elbow



22.5° Elbow

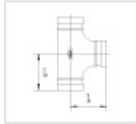


11.25° Elbow

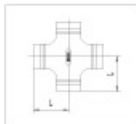


Size	Pipe O.D.	90° Elbow		45° Elbow	22.5° Elbow	11.25° Elbow
		Standard	Short		Standard	
		L	L	L	L	
DN	mm	mm	mm	mm	mm	mm
in	in	in	in	in	in	in
25	33.7	57	57	38	41	35
1	1.315	2.24	2.244	1.496	1.61	1.377
32	42.4	70	60	44	44	35
1¼	1.660	2.755	2.362	1.732	1.732	1.377
40	48.3	70	60	44	44	35
1½	1.900	2.755	2.362	1.732	1.732	1.377
50	57.0	83	70	51	51	35
	2.244	3.267	2.755	2.007	2	1.377
50	60.3	83	70	51	51	35
2	2.375	3.267	2.755	2.007	2	1.377
65	73.0	95	76	57	51	38
2½	2.875	3.74	2.992	2.007	2	1.496
65	76.1	95	76	57	51	38
	3.000	3.74	2.992	2.007	2	1.496
80	88.9	108	86	64	57	38
3	3.500	4.251	3.386	2.519	2.244	1.496
100	108.0	127	101.5	76	73	44
	4.252	5	3.996	2.992	2.874	1.732
100	114.3	127	101.5	76	73	48
4	4.500	5	3.996	2.992	2.874	1.889
125	133.0	140	122	83	73	51
	5.250	5.511	4.803	3.267	2.874	2.007
125	139.7	140	122	83	73	51
	5.500	5.511	4.803	3.267	2.874	2.007
150	159.0	165	140	89	79	51
	6.260	6.496	5.511	3.503	3.11	2.007
150	165.1	165	140	89	79	51
	6.500	6.496	5.511	3.503	3.11	2.007
150	168.3	165	140	89	79	51
6	6.625	6.496	5.511	3.503	3.11	2.007
200	219.1	197	175	108	98	51
8	8.625	7.755	6.889	4.251	3.858	2.007
250	273.0	229	215	121	111	54
10	10.750	9.015	8.464	4.763	4.37	2.125
300	323.9	254	245	133	124	57
12	12.750	10	9.645	5.236	4.88	2.244
350	377.0	280	280	146	127	89
	14.843	11.024	11.024	5.748	5	3.503

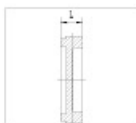
Tee



Cross



Cap



Reducer (grooved)

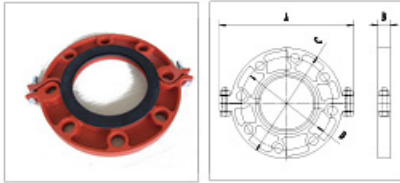


Reducer (threaded)



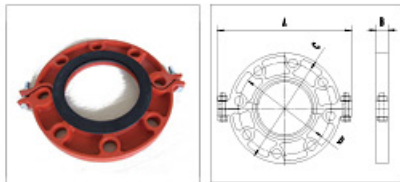
Size	Pipe O.D.	Tee		Cross	Ecceatric Cap	Cap	Reducer grooved	Reducer threaded	Eccentric Reducer
		Standard L	Short L	Standard L	L	L	L	L	L
DN	mm	mm	mm	mm	mm	mm	mm	mm	mm
in	in	in	in	in	in	in	in	in	in
25	33.7	57	57	57	25	25	64	64	64
1	1.315	2.244	2.244	2.244	0.99	0.99	2.519	2.519	2.519
32	42.4	70	60	60	25	25	64	64	64
1¼	1.660	2.755	2.362	2.362	0.99	0.99	2.519	2.519	2.519
40	48.3	70	60	60	25	25	64	64	64
1½	1.900	2.755	2.362	2.362	0.99	0.99	2.519	2.519	2.519
50	57.0	83	70	70	25	25	64	64	64
	2.244	3.267	2.755	2.775	0.99	0.99	2.519	2.519	2.519
50	60.3	83	70	70	25	25	64	64	64
2	2.375	3.267	2.755	2.755	0.99	0.99	2.519	2.519	2.519
65	73.0	95	76	76	25	25	64	64	64
2½	2.875	3.74	2.992	2.992	0.99	0.99	2.519	2.519	2.519
65	76.1	95	76	76	25	25	64	64	64
	3.000	3.74	2.992	2.992	0.99	0.99	2.519	2.519	2.519
80	88.9	108	86	86	25	25	64	64	64
3	3.500	4.251	3.386	3.326	0.99	0.99	2.519	2.519	2.519
100	108.0	127	101.5	101.5	25	25	76	76	76
	4.252	5	3.996	3.996	0.99	0.99	2.99	2.99	2.99
100	114.3	127	101.5	101.5	25	25	76	76	76
4	4.500	5	3.996	3.996	0.99	0.99	2.99	2.99	2.99
125	133.0	140	122	122	25	25	89	89	89
	5.250	5.511	4.803	4.803	0.99	0.99	3.504	3.504	3.504
125	139.7	140	122	122	25	25	89	89	89
5	5.500	5.511	4.803	4.803	0.99	0.99	3.504	3.504	3.504
150	159.0	165	140	140	25	25	102	102	102
	6.260	6.496	5.511	5.511	0.99	0.99	4.015	4.015	4.015
150	165.1	165	140	140	25	25	102	102	102
	6.500	6.496	5.511	5.511	0.99	0.99	4.015	4.015	4.015
150	168.3	165	140	140	25	25	102	102	102
6	6.625	6.496	5.511	5.511	0.99	0.99	4.015	4.015	4.015
200	219.1	197	175	175	30	30	127	127	127
8	8.625	7.755	6.889	6.889	1.181	1.181	5	5	5
250	273.0	229	215	215	32	32	152		
10	10.750	9.015	8.464	8.464	1.259	1.259	5.98		
300	323.9	254	245	245	32	32	178		
12	12.750	10	9.645	9.645	1.259	1.259	7		
350	377.0	280	280	280	40	40	160		
	14.843	11.024	11.024	11.024	1.575	1.575	6.299		

Grooved Flange



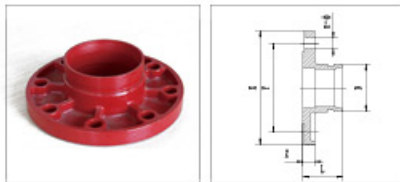
Nominal Size mm/in	Pipe O.D mm/in	Working Pressure PSI/MPa	Dimensions mm/in				Bolt Size No.-Size mm
			A mm/in	B mm/in	C mm/in	D mm/in	
50	60.3	230	222	23	165	125	4-M16
2	2.375	1.6	8.740	0.906	6.496	4.921	
65	76.1	230	240	23	185	145	4-M16
2½	2.875	1.6	9.448	0.906	7.283	5.708	
80	88.9	230	252	23	182	160	8-M16
3	3.500	1.6	9.921	0.906	7.559	6.299	
100	114.3	230	248	23	220	180	8-M16
4	4.500	1.6	9.783	0.906	8.661	7.086	
125	139.7	230	316	24	250	210	8-M16
5	5.500	1.6	12.44	0.944	9.842	8.267	
150	168.3	230	346	24	285	240	8-M20
6	6.625	1.6	13.622	0.944	11.22	9.448	
200	219.1	230	418	28	340	295	12-M20
8	8.625	1.6	16.456	1.102	13.38	11.614	

Grooved Flange ANSI150



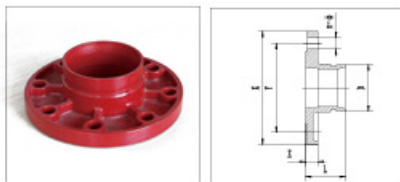
Nominal Size mm/in	Pipe O.D mm/in	Working Pressure PSI/MPa	Dimensions mm/in				Bolt Size No.-Size mm
			A mm/in	B mm/in	C mm/in	D mm/in	
50	60.3	300	206	22	152	121	4-M16
2	2.375	2.07	8.110	0.866	5.984	4.783	
65	73.0	300	230	22	178	140	4-M16
2½	2.875	2.07	9.055	0.866	7.007	5.511	
80	88.9	300	242	24	191	152	4-M16
3	3.500	2.07	9.527	0.944	7.519	5.984	
100	114.3	300	280	24	229	191	4-M16
4	4.500	2.07	11.023	0.944	9.015	7.519	
125	141.3	300	325	24.5	254	216	4-M16
5	5.563	2.07	12.795	0.964	10	8.503	
200	219.1	300	414.3	28	341.4	298.5	4-M16
8	8.625	2.07	16.311	1.102	13.44	11.751	

Flange Adaptor



Nominal Size mm/in	Pipe O.D mm/in D	Working Pressure PSI/MPa	Dimensions mm/in				Bolt Size No.-Size mm
			L mm/in	X mm/in	Y mm/in	Z mm/in	
50	60.3	230	60.3	165	125	16	4-M16
2	2.375	1.6	2.37	6.496	4.92	0.629	
65	73.0	230	60.3	185	145	16	4-M16
2½	2.875	1.6	2.37	7.283	5.70	0.629	
80	76.1	230	60.3	185	145	16	4-M16
3	3.000	1.6	2.37	7.283	5.70	0.629	
100	88.9	230	60.3	200	160	16	8-M16
4	3.500	1.6	2.37	7.874	6.29	0.629	
125	108.0	230	70	220	180	16	8-M16
5	4.250	1.6	2.755	8.661	7.08	0.629	
150	114.3	230	70	220	180	16	8-M16
6	4.500	1.6	2.755	8.661	7.08	0.629	
200	125	230	60.3	250	210	18	8-M16
8	5.250	1.6	2.37	9.842	8.26	0.708	
250	139.7	230	60.3	250	210	18	8-M16
10	5.500	1.6	2.37	9.842	8.26	0.708	
300	159.0	230	70	285	240	18	8-M20
12	6.250	1.6	2.755	11.22	9.448	0.708	
350	165.1	230	70	285	240	18	8-M20
14	6.500	1.6	2.755	11.22	9.448	0.708	
400	168.3	230	70	285	240	18	8-M20
16	6.625	1.6	2.755	11.22	9.448	0.708	
450	219.1	230	76.1	340	295	19	12-M20
18	8.625	1.6	2.99	13.38	11.61	0.748	
500	273.0	230	85	405	355	21	12-M24
20	10.750	1.6	3.346	15.944	13.97	0.826	
550	323.9	230	90	480	410	24	12-M24
22	12.750	1.6	3.543	18.11	16.14	0.944	
600	377.0	230	100	520	470	26	16-M24
24	14.843	1.6	3.937	20.47	18.50	1.02	

Flange Adaptor ANSI150



Nominal Size mm/in	Pipe O.D mm/in D	Working Pressure PSI/MPa	Dimensions mm/in				Bolt Size No.-Size mm
			L mm/in	X mm/in	Y mm/in	Z mm/in	
50	60.3	300	60.3	152	120.5	19	4-M16
2	2.375	2.07	2.37	5.98	4.744	0.748	
65	73.0	300	60.3	178	139.5	24	4-M16
2½	2.875	2.07	2.37	7.00	5.683	0.944	
80	88.9	300	60.3	190	152.5	24	4-M16
3	3.500	2.07	2.37	7.48	6.00	0.944	
100	114.3	300	70	229	190.5	24	4-M16
4	4.500	2.07	2.755	9.015	7.5	0.944	
125	141.3	300	60.3	254	216	24	8-M20
5	5.563	2.07	2.37	10	8.503	0.944	
150	168.3	300	70	279	241.5	25	8-M20
6	6.625	2.07	2.755	10.98	9.507	0.984	
200	219.1	300	76.1	343	298.5	29	8-M20
8	8.625	2.07	2.99	13.50	11.751	1.141	
250	273.0	300	85	406	362	30	12-M22
10	10.750	2.07	3.346	15.98	14.251	1.181	
300	323.9	300	90	483	432	32	12-M22
12	12.750	2.07	3.543	18.01	17.00	1.259	



**EUROPEAN INSPECTION AND CERTIFICATION COMPANY S.A.
NOTIFIED BODY 1128**

19 CHALASIA EKATONIKON STR. 1482, METAMORFOSI, ATHENS, GREECE
TEL: 21047691, FAX: 21048014, 0030 210476910000, WWW.EUROCERT.COM

CERTIFICATE No. CN/CE/PT/04/011

CERTIFICATE

**PRESSURE EQUIPMENT DIRECTIVE 97/23/EC
INTERNAL MANUFACTURING CHECKS (Module A)**

EUROCERT is a Notified Body for PED with Identification No. CE 1128

Manufacturer Name : WEIFANG SHIFENG CASTING CO., LTD.
Address : NO. 3009 WUJIANG SOUTH RD., WEIFANG DISTRICT, WEIFANG CITY
SHANXING PROVINCE, CHINA, 261512
Type of Pressure Equipment : GROOVED COUPLINGS AND FITTINGS
Model : S04016, S04016, S04016B, S04016, S04016, S04016, S04016, S04016
S04016, S04016, S04016, S04016, S04016, S04016, S04016, S04016, S04016
S04016, S04016, S04016, S04016, S04016

On manufacturer's request it is hereby attested, that EUROCERT S.A. has monitored the manufacturer's final assessment against the provisions of Annex III Module A 97/23/EC Directive and found to be fulfilled. The manufacturer must affix the CE Marking, on his own responsibility, to each item of pressure equipment as displayed below:

CE

Preconditions:

It is required that the above pressure equipment must always come with by manufacturer's declaration of conformity and by the relevant instructions of use.

Third Party Authority Stamp



Date and Place of Issue
Aθήνα, 27/05/2011
For EURO CERT S.A.


VASSILIOS N. SPINOS
DIRECTOR OF DEVELOPMENT



QUALITY MANAGEMENT SYSTEM CERTIFICATE

Certificate No.: 00109Q215380R2M/3600

We hereby certify that
Weifang 100tong Casting Co., Ltd.

No.1919 South of Jichang Road, Weicheng District, Weifang City, Shandong Province, China

by reason of its
Quality Management System
has been awarded this certificate for compliance with the standard
ISO9001: 2008
GB/T 19001-2008

The Quality Management System Applies in the following area:
Production Grooved Couplings and Fittings- Plastic-Coated Pipe

Exclusions: Design and Development Requirement

Certified since: Nov. 09, 2009 Valid from: Dec. 24, 2009 Valid until: Dec. 23, 2012

After a surveillance cycle, the certificate is valid only when used together with an Acceptance Notice of Surveillance Audit issued by CQC.
Please access www.cqc.com.cn for checking validity of the certificate.



Signed by: Wang Kejie



CHINA QUALITY CERTIFICATION CENTRE

Section 9, No. 129, Zhonghuan (the South Fourth Ring Road) Xida/Weidao Road, Beijing 100070, China
<http://www.cqc.com.cn>